



Drew Place, Caterham, CR3 5FE

Offers in excess of £290,000

Mc. MONOCHROME | HOMES

PROPERTY SUMMARY

OVERVIEW

WE PAY TOWARDS YOUR LEGAL FEES A well presented two bedroom ground floor flat situated on Drew Place in the highly sought after Hambleton Park. The property offers a communal garden and two allocated parking spaces.

Accommodation

Drew Place provides a spacious living space, great for first time buyers, downsizing and investors. This ground floor property has a large living room, which gives you direct access into the communal garden, the kitchen is situated next to the living room with plenty of storage. The two bedrooms are both great sizes, one with built in storage. The modern bathroom is a great size, holding a bath with shower as well as a toilet and sink. The property comes alongside two allocated parking spaces as well as visitors bays. The home is well presented and modern throughout.

Location

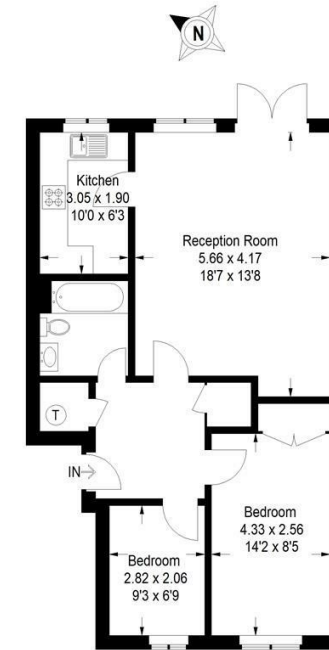
Drew Place is situated on the highly sought after Hambleton Park. The property is walking distance to the Tesco store at the Village, and amenities such as an health centre, library, restaurants and pubs. Caterham offers a comprehensive range and selection of shops including two supermarkets and mainline train station. The area is close to open countryside whilst the motorway network can be accessed via junction 6 off the M25 at Godstone. The Surrey National golf club is also within a short distance of the property. Direct train services to London Bridge and Victoria are from Caterham (1.4 miles) and additionally both Upper Warlingham and Coulsdon South stations are a short distance away. The A22 offers easy access back into London while the M25/M23 provide fantastic commuting links to Gatwick and the South East.

Disclaimer

"These details are prepared as a general guide only, and should not be relied upon as a basis to enter into a legal contract, or to commit expenditure. An interested party should consult their own surveyor, solicitor or other professionals before committing themselves to any expenditure or other legal commitments. If any interested party wishes to rely upon any information from the agent, then a request should be made and specific written confirmation can be provided. The Agent will not be responsible for any verbal statement made by any member of staff, as only a specific written confirmation should be relied upon. The Agent will not be responsible for any loss other than when specific written confirmation has been requested."

Drew Place, CR3

Approximate Gross Internal Area
62.1 sq m / 668 sq ft



Ground Floor

This plan is for layout guidance only. Not drawn to scale unless stated. Windows and door openings are approximate. Whilst every care is taken in the preparation of this plan, please check all dimensions, shapes and compass bearings before making any decisions reliant upon them. (ID988553)



Energy Efficiency Rating			Environmental Impact (CO ₂) Rating		
	Current	Potential		Current	Potential
Very energy efficient - lower running costs					
(92 plus) A			Very environmentally friendly - lower CO ₂ emissions		
(81-91) B			(92 plus) A		
(69-80) C			(81-91) B		
(55-68) D			(69-80) C	69	77
(39-54) E			(55-68) D		
(21-38) F			(39-54) E		
(1-20) G			(21-38) F		
Not energy efficient - higher running costs					
Not environmentally friendly - higher CO ₂ emissions					
England & Wales		EU Directive 2002/91/EC	England & Wales		EU Directive 2002/91/EC

5C HIGH STREET, CATERHAM, SURREY, CR3 5UE

T: 01737 400 096 | E: HELLO@MONOCHROMEHOMES.CO.UK | MONOCHROMEHOMES.CO.UK

